

# MADECO OVAL GEAR FLOW METER



# Low Micro Flow Meter

## Description

Our Micro flow meter is a kind of oval gear flow meter ,along to positive displacement flow meter. there is thousands of manufacturers who can produce oval gear flow meter. but only several manufacturer who have technology to produce micro flow meter.

MADECO micro flow meter offer the highest accuracy and measure for various viscosity liquid. special patent technology to measure flow from 0.1ml/min and ensure working life more 5 years.

MADECO micro flow meter is wildly used for various industries for precision measurement. So far it has been serviced for more 100 using condition, such as fuel oil measurement, Adhesive control ,Hydraulic life cycle testing, electrolyte dosing, natural gas odorization

## Features

All CNC machines is all use Siemens system, so far the perform ance of MADECO low volume flow meter has achieved or over the highest standard. through years' effort. For example, min flow of low volume flow meter is 0.1ml/min,pulse ratio can be 1ml/pulse.max pressure is up to 1000bar, etc.

## Basic parameters of Micro Flow Meter

Model	Flow range	Connection
MD-M2-SS/AL	0.5~150 ml/min	G1/8 female thread
MD-M3-SS/AL	3-300 ml/min	G1/8 female thread
MD-M5-SS/AL	5-1000 ml/min	G1/8 female thread
MD-M6-SS/AL	0.5-100 l/H	G1/4 female thread
MD-M9-SS/AL	6-600 l/H	G1/4 female thread
MD-M12-SS/AL	0.3~30 L/min	G1/2 female thread
MD-M25-SS/AL	5-110 l/min	G1 female thread
MD-M40-SS/AL	10-250L/min	G1 1/2 female thread
MD-M50-SS/AL	10-500L/min	G2 female thread

The Varios medium has been pass tested by the MADECO low micro flow meter

water	gum	chemicals	fluid
oil	dyes	liquid	adbrasive adhesive
grease	petrochemicals	isocyanate	two-component mixers
paints	adhesive	ink	waterbased liquid
skydrol	brake fluid	hydraulic oil	sealant
gear oil	low viscosity	lubracating	methylbenzene
Diesel	Methanol	methyl alcohol	medium viscosity
polyol	high viscosity	offset ink	Toluene
lacquer	low lubricity	resin	Pharmaceuticals
solvent	cavity wax	wax	clear lacquer
glycol	glycerin	sodium hydroxide	caustic soda
ethylene	diethylene	triethylene	propylene
corn oil	cocconut oil	molasses	bhylene
palm oil	olive oil	lard oil	cotton oil
soy bean oil	rosin oil	rape seed oil	dimethylthylsufid DMS
additive	syrup	sugar	electrohydrodynamic
liquefied gas	perfume	aromatic substance	pharmaceutical
peanut oil	fluid food	thioether	tetrahydrothiophen THT
acryiat-composite	Thiol	mercaptan	mercaptan-composite

**The Using condition of low micro flow meter**

hydraulic system	precision dosing	2 and 3 component application
process control	open/closed loop control	corrosive chemical dispensing
water treatment	additive injection	automobile industry
system monitoring	laundry chemical	plastic technology
print process	chemical batching	chemical packaging and blending
ratio control	consumption measurement	oil metering
metering plant	hydraulic test stand	batching control
lacquering plant	2 component plant	flow rate measurement
dosing	Odorisation	closed-loop management

## MD-M2-SS Low Micro Flow Meter



## Parameters

### Basic parameters of low micro flow meter

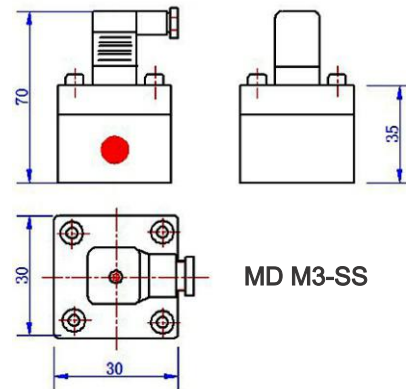
Model	MD-M2-SS
Flow Range	0.5~150 ml/min
Accuracy	0.2% or 0.5%
Temperature	-30~80C
Pressure	32 Bar
Output	Square-wave pulse(reed switch or hall sensor)
Supply	4~26 VDC
Material	All stainless steel material

## Features

### MD-M2-SS Low Micro Flow Meter

- The low micro flow meter flow range is 0.3~150 ml/min;
- The temperature is 200°C and the max pressure is 1000Bar;
- The standard type accuracy is 0.5%, the max accuracy is 0.2% for some special industry;
- The flow meter with longer working life by the all stainless steel material;
- Wide range of application,such as the hydraulic system,Lubriting industry and painting.
- The flow range ratio beyond 100:1.

## MD-M3-SS Low Volume Flow Meter



MD M3-SS

## Parameters

Basic Parameters of Low Volume Flow Meter:

Model: MD-M3-SS

Flow Range: 3~300ml/min

Accuracy: 0.2% or 0.5%

Temperature: -30~80°C (max temperature 200°C)

Pressure: 32Bar

Output: square-wave pulse (reed switch, 2 wires; hall sensor, 3 wires)

Supply: 4~26VDC

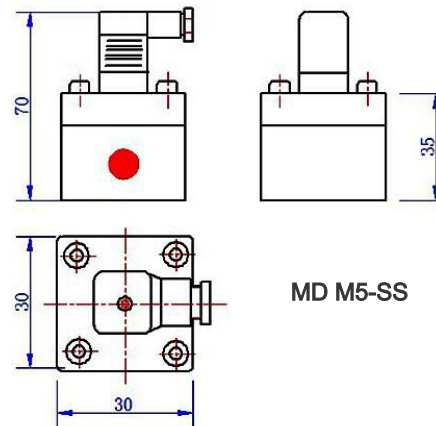
Material: all stainless steel 316L

## Features

### MD-M3-SS

- flow range: 3~300ml/min
- Max pressure is up to 1000bar;
- Highest temperature about 200°C;
- 0.2% high accuracy beyond 90% peers;
- Micro flow meter with longer working life by all stainless steel material;
- Range ratio beyond 100:1;
- Wide range of application, such as the hydraulic system, Lubricating industry and painting.

## MD-M5-SS Low Flow Meter



MD M5-SS

## Parameters

Basic parameters of low flow meter

Model: MD-M5-SS

Flow Range: 5~1000 ml/min

Accuracy: 0.2% or 0.5%

Temperature: -30~80°C

Pressure: 32Bar

Output: square-wave pulse (reed switch, 2 wires; hall sensor, 3 wires)

Supply: 4~26VDC

Material : All stainless steel 316L

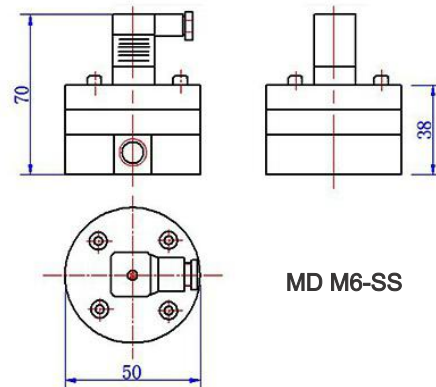
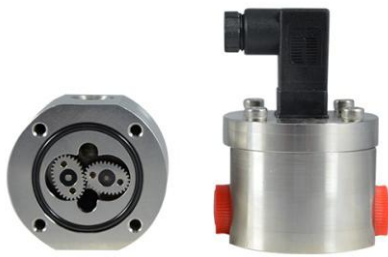
## Features

### MD-M5-SS Low Flow Meter

- Flow range: 5~1000 ml/min;
- Accuracy: the standard type 0.5%, the highest is 0.2% beyond 90% peers.
- The longer working life with all stainless steel material;
- Range ratio: Beyond 100:1;
- Wide range of application, such as the hydraulic system, Lubricating and painting.



## MD-M6-SS Oval Gear Flow Meter



## Parameters

Basic parameters of oval gear flow Meter

Model:MD-M6-SS

Flow Range: 0.5~100 L/h

Accuracy: 0.2% or 0.5%

Temperature:-30~80C

Pressure:32Bar

Output: square-wave pulse(reed switch,2 wires;hall sensor,3 wires)

Supply: 4~26VDC

Material :all stainless steel 316L

## Features

### MD-M6-SS Oval Gear Flow Meter

- The flow range : 0.5~100 L/H.
- Accuracy : the standard type is 0.5%,the highest accuracy is 0.2% beyong 90% peers for any special industry.
- The oval gear flow Meter with longer working life by the all stainless steel material.
- The Range ratio :100 - 1.
- Wide range of application,such as the hydraulic system,Lubricating and painting.
- High Temperature about 200C,the standard type is -30~80°C



## Parameters

Basic Parameters of oval gear flow measurement

Model: MD-M9-SS

Flow Range: 6~600 L/h

Accuracy: 0.2% or 0.5%

Temperature: -30~80°C

Pressure: 32 Bar

Output: square-wave pulse (reed switch, 2 wires; hall sensor, 3 wires)

Supply: 4~26 VDC

Material: all stainless steel 316L

## Features

**MD-M9 flow meter flow range is 6~600 L/h;**

- The standard type accuracy is 0.5%, the highest accuracy is 0.2% for some special industry;
- The highest temperature is 200°C, and the max pressure is 1000 bar;
- The oval gear flow meter with longer working life by the all stainless steel material.
- Wide range of applications, such as the Hydraulic system, Lubricating industry and painting.





## Parameters

Basic parameters of positive displacement flowmeter

Model:MD-M12-SS

Flow Range: 0.3~30 L/min

Accuracy: 0.2% or 0.5%

Temperature:-30~80°C

Pressure:32Bar

Output: square-wave pulse(reed switch,2 wires;hall sensor,3 wires)

Supply: 4~26VDC

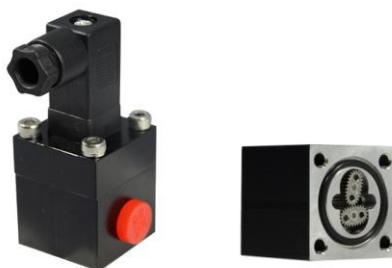
Material :All stainless steel 316L

## Features

MD-M12-SS Positive Displacement Flowmeter

- The flow range is 0.3~3 L/min;
- The standard type accuracy is 0.5%,and we also have the 0.2% accuracy flow meters for some special industry;
- The highest temperature is 200°C;
- The max pressure is 1000 Bar;
- MD-M12 flow meter with longer working life by the all stainless steel material;
- Wide range of application,such as the hydraulic system,Lubricating industry and Painting.

## MD-M2-AL Ultra Micro flow meter



## Parameters

Basic Parameters of ultra micro flow meter

Model:MD-M2-AL

Flow range:0.5~150ml/min

Accuracy:0.2% or 0.5%

Temperature:-30~80°C

Pressure:32Bar

Output:Square-wave pulse(reed switch and hall sensor)

Supply:4~26VDC

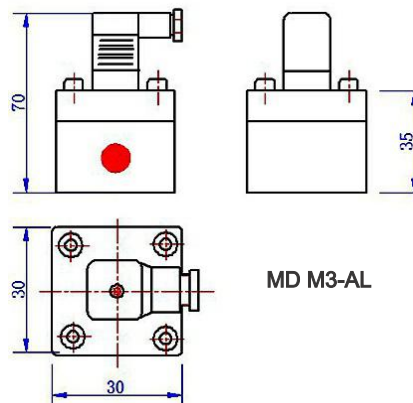
Material:Aluminum

## Features

### MD-M2-AL Ultra Micro flow meter

- The ultra micro flow meter flow range is 0.5~150 ml/min;
- The highest temperature is 200°C and the max pressure is 1000Bar;
- The standard type accuracy is 0.5%,the max accuracy is 0.2% for some special industry;
- The ultra micro flow meter with longer working life by the Aluminum;
- Wide range of application,such as the hydraulic system,Lubriting industry and painting.

## MD-M3-AL Micro Liquid Flow Meter



MD M3-AL

## Parameters

Basic Parameters of micro liquid flow meter:

Model: MD-M3-AL

Flow range: 3~300ml/m n

Accuracy : 0.2% and 0.5%

Temperature: -30~80°C(max 200°C)

Pressure : 32Bar

Output: square-wave pulse(reed switch,2 wires;hall sensor,3 wires)

Supply: 4~26VDC

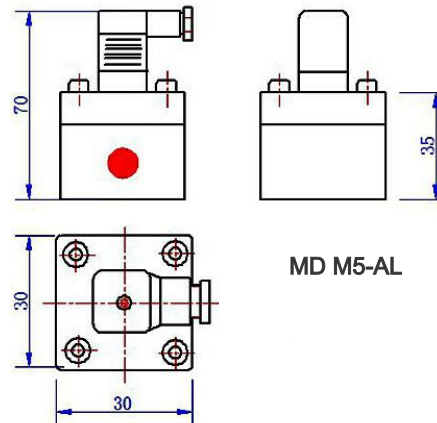
Material:Body:aluminum,Gear:SS316L.

## Features

**MD-M3-AL flow range:3~300ml/min**

- Max pressure is up to 1000bar;
- Highest temperature about 200°C;
- 0.2% high accuracy beyond 90% peers;
- Micro flow meter with longer working life by all stainless steel material;
- Range ratio beyond 100:1;
- Wide range of application,such as the hydraulic system,Lubricating industry and painting.

## MD-M5-AL Low Flow Flowmeter



## Parameters

Basic Parameters of low flow flowmeter

Model: MD-M5-AL

Flow Range: 5~1000 ml/min

Accuracy: 0.2% or 0.5%

Temperature: -30~80°C

Pressure: 32Bar

Output: square-wave pulse (reed switch, 2 wires; hall sensor, 3 wires)

Supply: 4~26VDC

Material: Body: Aluminum, Gear: stainless steel 316L

## Features

### MD-M5-AL Low Flow Flowmeter

- Flow range; 5~1000 ml/min ;
- Accuracy :highest accuracy 0.2%,the standard type 0.5% ; about beyond the 90% peers;
- Max pressure :1000Bar ;
- Temperature:-30~80°C the highest temperature is 200°C;
- The special material with longer working life;
- Range ratio beyong 100:1;
- Wide range of application,such as the hydraulic system,Lubricating industry and painting.

**MD-M6-AL Oval Gear Flow Meter****Parameters**

Basic parameters of oval gear flow meter

Model:MD-M6-AL

Flow Range: 0.5~100 L/h

Accuracy: 0.2% or 0.5%

Temperature:-30~80°C

Pressure:32Bar

Output: square-wave pulse(reed switch,2 wires;hall sensor,3 wires)

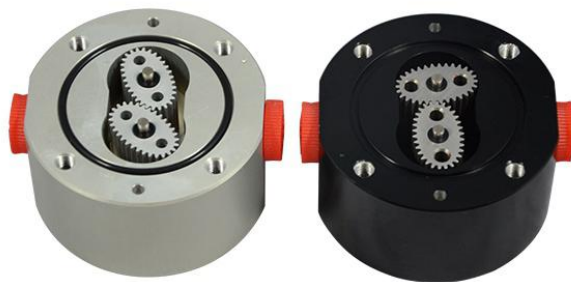
Supply: 4~26VDC

Material:Body: Aluminum,Gear:Aluminum

**Features****MD-M6-AL Oval Gear Flow Meter**

- the flow range:0.5~100 L/H;
- Accuracy:the standard type 0.5%,the highest accuracy is 0.2%,Beyond 90 peers;
- The oval gear flow meter with longer working life with the special material;
- Range ratio:beyond 100: 1;
- Wide Range of application,such as the hydraulic system ,Lubricating and painting.
- High Temperature about 200C.the standard type -30~80°C.

## MD-M9-AL Oval Gear Flowmeter



## Parameters

Basic Parameters of oval gear flowmeter

Model: MD-M9-AL

Flow Range: 6~600 L/h

Accuracy: 0.2% or 0.5%

Temperature: -30~80°C

Pressure: 32 Bar

Output: square-wave pulse (reed switch, 2 wires; hall sensor, 3 wires)

Supply: 4~26 VDC

Material: Aluminum

## Features

**MD-M 9- flow range is 0.6~600 L/h**

- The standard type accuracy is 0.5%, the highest accuracy is 0.2% for some special industry;
- The highest temperature is 200°C;
- The max pressure is 1000 Bar;
- The flow meter with longer working life by the material;

Wide range of applications, such as the hydraulic system, Lubricating industry and painting.





## Parameters

Basic parameters of positive displacement flow meter

Model:MD-M12-AL

Flow Range: 0.3~30 L/min

Accuracy: 0.2% or 0.5%

Temperature:-30~80°C

Pressure:32Bar

Output: square-wave pulse(reed switch,2 wires;hall sensor,3 wires)

Supply: 4~26VDC

Material: Aluminum

## Features

**MD-M12 flow range is 0.3~30 L/min;**

- The standard type accuracy is 0.5%,the highest accuracy is 0.2% for some special industry;
- The highest temperature is 200°C;
- The max pressure is 1000 Bar;
- The flow meter with longer working life by the material;
- Wide range of applications,such as the hydraulic system,Lubricating industry and painting.



## Parameters

### Basic parameters oval gear flow meter

Model	MD-M25-AL
Flow Range	0.5~100 L/min
Accuracy	0.2% or 0.5%
Temperature	-30~80°C
Pressure	32 Bar
Output	Square-wave pulse (reed switch or hall sensor)
Supply	4~26VDC
Material	Aluminum

## Features

### MD-M25-AL Oval gear flow meter

- The flow range is 0.5~100 L/min;
- The standard type accuracy is 0.5%, we also have the 0.2% accuracy flow meters for some special industry;
- The high temperature is 200°C and the max pressure is 1000 bar.
- The oval gear flow meter with longer working life by the special material. the working life about 5 years;
- Wide range of applications, such as the hydraulic system, Lubricating industry and painting.

## Micro flow meter



## Parameters

### Basic Parameters

Accuracy	0.2% , 0.5%
Temperature	-30~80°C(Max:200°C)
Pressure	32bar(Max:1000bar)
Output	square-wave pulse(hall sensor,3 wires; reed switch,2 wires)
Supply	4-26VDC
Material	anodized aluminum or SS316L

## Features

### Micro flow meter

- Min flow of micro flow meter is 0.1ml/min;
- Pulse ratio can be 1ml/pulse;
- Max pressure is up to 1000bar;
- Highest temperature about 200°C;
- 0.2% high accuracy beyond 90% peers;
- Micro flow meter with longer working life by all stainless steel material;
- Range ratio beyond 100:1;
- Wide range of application,such as the hydraulic system,Lubricating industry and painting.

## Selection Table

Select the MADECO ,Select the right,we will provide the professional services for you.

Bellow is the selection table,Pls fill the details of working conditions,Tks.

Using condition:		Qty:	
Medium		Corrosive or Non	
Min flow		Viscosity	
Normal flow		Working temperature	
Max flow		Working pressure	
<b>If for flow monitor:</b> Do you need to display total flow or current ? or both ?			
<b>If for dosing:</b> How many litres per batch ? and how long it takes ?			
What brand you use before ?			