

Clamp-on flow meter for liquid

Model: MDUF4315K

Applications

- Replacing traditional wheel flow meter
- Flow measurement control and monitor
- Calculate flow volume
- Pump protection
- Proportion control
- Water all ocation
- Leakage detection

Features

- It works once the device being clamp on the pipe
- Easy to install, no need to cut off the pipe
- It measures without any adjustments
- Permanent and resettable accumulated data
- Multi-output option
- LCD display
- Protection level IP67

Available liquid

- Reclaimed water
- Soften water
- Cooling water
- Pure water
- Circulating water and etc...



Model Selection

Model No.	Transmitter Description		
MDUF4315K	Flow rate: 0-6m/s Accuracy level: 1.5%(FS) Measuring caliber: DN15~DN50 Keyboard: no Display: LCD digital Power: 3~4W Power supply: input: 220V 1A; output: 12V 1A Outer casing material: ABS, aluminum alloy Protection level: IP67 Operating temperature: -10°C~+50°C Cable length: 3m		
A	I/O option (Communication)		
1	RS-485		
2	RS-485, OCT pulse output		
3	4-20mA, OCT pulse output, relay output, RS-485		
B	I/O option (Communication)		
N	None		
C	Description of sensor		
Name: Cl amp-on sensor Installation: Cl amp-on Measure medium temperature: -10 ~ +50°C			Installation: V-guidance, measure medium temperature: -10 ~ +50°C
		Dn100	
		DN150	
		DN200	
		DN250	
		Dn300	

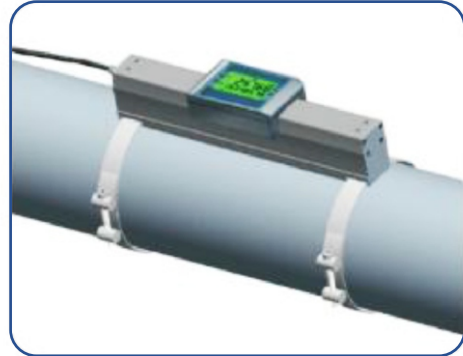
Installation

a. Clamp-on installation



For pipe DN15~DN50

b. V-guidance installation



For pipe DN65~DN300

Note: DN15~DN300 is a vailable, if the Diameter of the pipe more than 300mm, please contact us for more

Steps

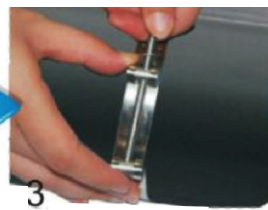
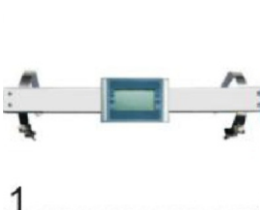
a. Clamp-on installation

Take out the device → clamp on the pipe → fasten the clamp → done



b. V-guidance installation

Take out the device → clamp on the pipe → fasten the clamp → done





Address: 7191 Yonge street, Toronto, Canada

Tel: +16472221281(5 line)

Web: www.madecotech.com

Email: Info@madecotech.com