

Heavy duty differential pressure gauge

Model: DP4

Applications

- Filtration Monitoring
- Flow Measurement
- Leak detection
- Tank Level Measurement

Special features

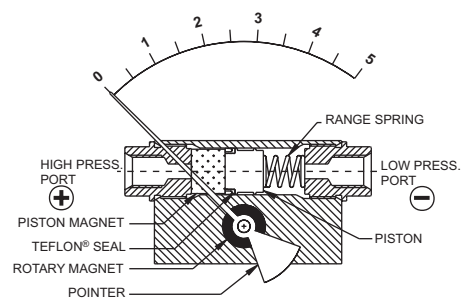
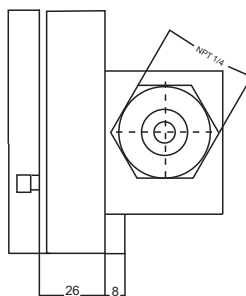
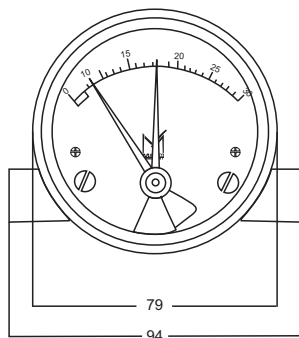
- 1 year warranty
- Static pressure capability 6000 psi, 10000 psi optional
- Ranges from 1 psi to 150 psi
- Superior magnets for smoother pointer motion
- Small convoluted diaphragm actuator

Description

- | | |
|-------------------------------|---|
| ■ Accuracy | 3% ascending pressure full scale differential |
| ■ Dial Sizes | 3", 4", 5" |
| ■ Ranges | 0-150psi |
| ■ Process Connection Location | Bottom, back, in-line |
| ■ Process Connection Sizes | ¼ NPT & G Female |
| ■ Migration | None; Zero leakage from high to low port |
| ■ Process Temperature | -40 - 100 °C |
| ■ Body material | Stainless steel body |
| ■ Red pointer follower | Indicates the histeric maximum differential pressure (resettable) |
| ■ Mounting | Direct |
| ■ Window | Acrylic, glass, hard glass, safety glass |
| ■ Wetted parts | 316L stainless steel |
| ■ Maximum Static Pressure | 6000 psi, 10000 psi optioanal |
| ■ Environ protection | IP 65 |



High static pressure



MODEL : DP4 Piston



DP4 Differential pressure gauge

| ORDERING CODE | Example: | DP4 | 3 | L | 2 | G | S | A | A | V | AT | WA | Note |
|--|----------|-----|---|---|---|---|---|---|---|---|----|----|------|
| Dial Size/Model Code | | | 3 | | | | | | | | | | |
| 3 - 80mm(3") | | | | | | | | | | | | | |
| 4 - 100mm(4") | | | | | | | | | | | | | |
| 5 - 125mm(5") | | | | | | | | | | | | | |
| Process Connection Type | | | | | | | | | | | | | |
| L - In - line (std) | | | | L | | | | | | | | | |
| B - Back | | | | | | | | | | | | | |
| T - Bottom | | | | | | | | | | | | | |
| Process Connection Sizes | | | | | | | | | | | | | |
| 2 - ¼NPT | | | | | 2 | | | | | | | | |
| 4 - ¼ G | | | | | | | | | | | | | |
| 6 - Customer | | | | | | | | | | | | | |
| Function | | | | | | | | | | | | | |
| G - Gauge | | | | | | G | | | | | | | |
| S - Switch | | | | | | | | | | | | | |
| W - Gauge + Switch | | | | | | | | | | | | | |
| Piston and Process Connection Material | | | | | | | | | | | | | |
| S - 316L Stainless steel | | | | | | | S | | | | | | |
| M - Monel® 400 | | | | | | | | | | | | | |
| H - Hastelloy | | | | | | | | | | | | | |
| C - Customer | | | | | | | | | | | | | |
| Window | | | | | | | | | | | | | |
| S - Safety glass | | | | | | | | | | | | | |
| A - Acrylic | | | | | | | | A | | | | | |
| H - Hard glass | | | | | | | | | | | | | |
| Body Material | | | | | | | | | | | | | |
| A - Aluminum (anodized) | | | | | | | | | A | | | | |
| B - Brass | | | | | | | | | | | | | |
| S - 316 St. Steel | | | | | | | | | | | | | |
| Seals | | | | | | | | | | | | | |
| B - Buna | | | | | | | | | | | | | |
| V - Viton | | | | | | | | | | V | | | |
| E - EPDM | | | | | | | | | | | | | |
| Accuracy | | | | | | | | | | | | | |
| AT - 3% (std.) | | | | | | | | | | | AT | | |
| AC - 2% | | | | | | | | | | | | | |
| Options | | | | | | | | | | | | | |
| SC - Single scale | | | | | | | | | | | | | |
| DS - Dual scales | | | | | | | | | | | | | |
| FS - Flow measurement dial | | | | | | | | | | | | | |
| OS - Overload stop | | | | | | | | | | | | | |
| GF - Glycerin filling | | | | | | | | | | | | | |
| QC - Low temperature silicone fill for ambient temperature down to -94°F (-70°C), including Fluorosilicone sealing | | | | | | | | | | | | | |
| SH - Red set hand, stationary (dry case only) | | | | | | | | | | | | | |
| CC - Calibration certificate | | | | | | | | | | | | | |
| NH - Stainless steel tag wired to case | | | | | | | | | | | | | |
| AT - ATEX | | | | | | | | | | | | | |
| ST - 10000 psi static pressure | | | | | | | | | | | | | |
| WA - One year warranty | | | | | | | | | | | | WA | |
| Other | | | | | | | | | | | | | |





Address: 7191 Yonge street, Toronto, Canada

Tel: +16472221281(5 line)

Web: www.madecotech.com

Email: Info@madecotech.com