

Standard Pressure Gauge

With liquid filling

Model: PI5

Applications

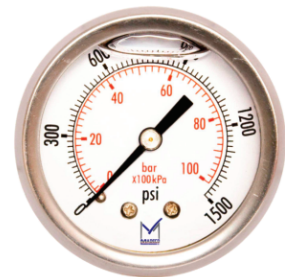
- For measuring points with high dynamic pressure loads or vibrations
- Pumps and compressors
- Hydraulic and pneumatic systems
- Suitable for gaseous or liquid media that will not obstruct the pressure system

Special features

- Reliable and cost-effective
- Vibration and shock resistant
- Nominal size 40 mm, 50 mm, 63 mm, 100 mm, 160 mm, 200 mm, and 250 mm
- Scale range vacuum up to 1000 bar

Description

- **Accuracy class** 2.5% for 40 and 50 mm dials; 1.6% for 63 to 250 mm dials; 1% (option) for 100 to 250 mm
- **Pressure element** Brass C-type or helical type
Stainless steel 304 and 316 (option)
- **Process connection** Brass back & bottom
NS 63: ¼ BSP, NS 100, 160: ½ BSP, NPT (option)
- **Socket & connection** Brass, Stainless steel 304 and 316 (option)
- **Window** Glass, Plexiglass, Acrylic, (option)
- **Permissible temperature** Ambient: -20 ... +60 °C
Medium: +120°C
- **Movement** Copper alloy
- **Pointer** Aluminium, black
- **Dial** Aluminium, white, black lettering,
- **Range** 0...10 to 0...15.000 psi;
0...60 to 0...100.000 kPa;
0...0.6 to 0...1000 bar
Vacuum & compound ranges are available. single or double scale dials.



- Pressure limitation**
 - Steady: 3/4 x full scale value
 - Fluctuating: 2/3 x full scale value
 - Short time: Full scale value

- Temperature error**
 - When the temperature of the measuring system deviates from the reference temperature (+20 °C):
 - max. ±0.4 %/10 K of full scale value

PI5 Pressure Gauges

ORDERING CODE	Example: PI5	4	T	2	L	B	AT	GF	Note
Dial Size									
0 - 40 mm(1 1/2")									
1 - 50 mm(2")									
2 - 63 mm(2 1/2")									
4 - 100mm(4")		4							
6 - 160mm(6")									
8 - 200mm(8")									
10 - 250mm(10")									
Process Connection Type									
T - Bottom			T						
B - Back									
Process Connection Sizes									
2 - 1/4 NPT Male Dial 40 1/4 NPT Male NS 50, 63 Dial 1/2 NPT Ns100 to 250 mm				2					
4 - 1/4 BSP Male Dial 40 1/4 BSP Male NS 50, 63 Dial 1/2 BSP Ns100 to 250 mm									
6 - Customer									
Case Design									
D - Dry									
L - Liquid fill					L				
Tube and Process Connection Material									
B - Brass						B			
S - St. steel 304									
I - St. steel 316									
C - Customer									
Accuracy									
AT - 1.6 % (std.)							AT		
AC - 1 %									
Options									
SC - Single scale									
DS - Dual scales									
YW -316L Stainless steel case									
OS - Overload stop									
GF - Glycerine filling								GF	
SF - Silicone filling									
SG - Safety glass									
UC - U - Clamp for flush mounting									
SH - Red set hand, stationary (dry case only)									
BF - Back flange for wall mounting									
MF - Front flange for panel mounting									
CC - Calibration certificate									
NH - Stainless steel tag wired to case									
AT - ATEX									
WA - One year warranty									
Other									



Address: 7191 Yonge street, Toronto, Canada

Tel: +16472221281(5 line)

Web: www.madecotech.com

Email: Info@madecotech.com