

BOURDON TUBE PRESSURE GAUGE WITH OUTPUT SIGNAL MODEL : PGT1

Special features

- 4-20 mA output
- IP- 67 protection (waterproof)
- Acquisition and display of process values
- Transmission of process values to the control room,
4 ... 20 mA, 0 ... 20 mA, 0 ... 10 V
- Safety-related applications
- Measuring ranges 0 ... 0.6 bar to 0 ... 1600 bar



Description

At any point where the process pressure has to be indicated locally, and, at the same time, a signal is wanted to be transmitted to a central controller or remote control room,

The model PGT1 high-quality, stainless steel safety pressure gauge with a nominal size of 100 or 160.

the electrical output signal
proportional to the pressure, 4 ... 20 mA, is produced.

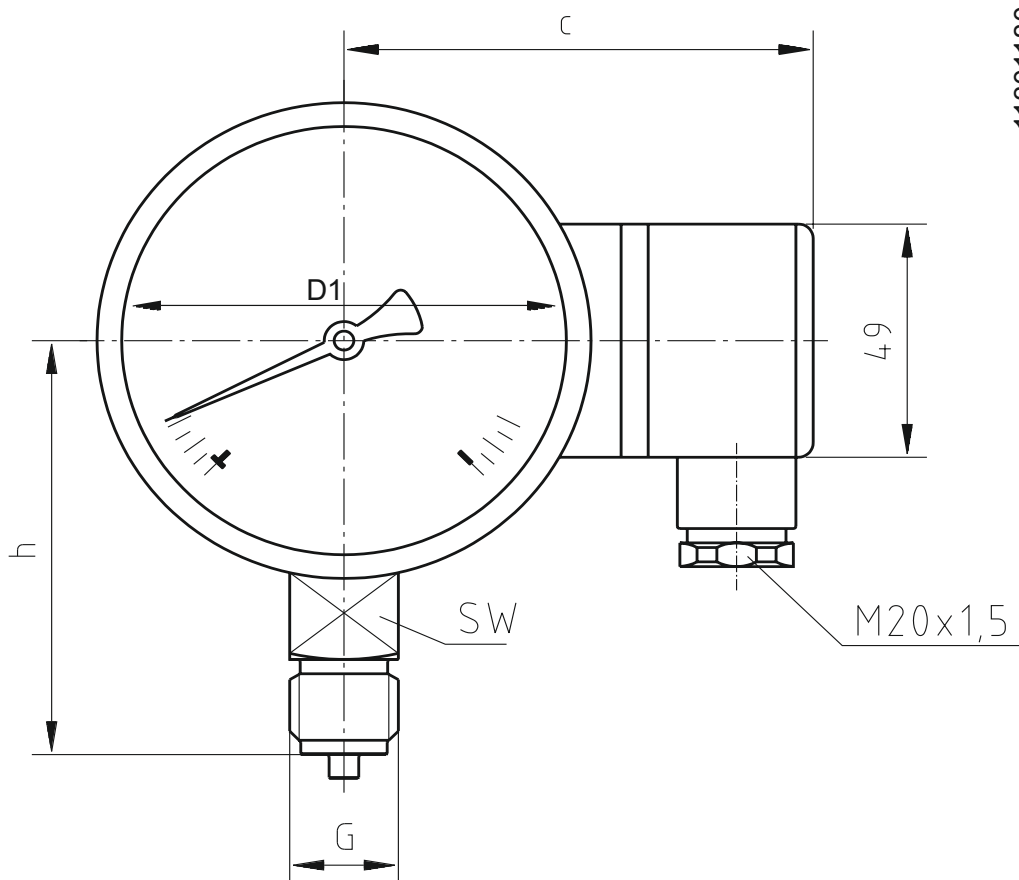
The measuring span (electrical output signal) is set automatically along with the mechanical display, i.e. the scale over the full display range corresponds to 4 ... 20 mA. The electrical zero point can also be set manually.

Specifications

Accuracy	1 % f.s.
Out Put	4 - 20 mA ... 1 - 5 VBC ... 0 - 10 VDC
Case	304 St. steel with bezel
Case Diameter	100, 160 mm
Connection	Back, Bottom
Pressure Ranges	vacuum up to 1600 Bar - see the table
Over Pressure	1.25 % max. pressure
Power Supply	10 ... 32 VDC
Storage Temperature	-20 ... +85 C
Ambient Temperature	-10 ... +60 C
Medium Temperature	-20 ... +100 C
Protection Class	IP - 65



11301180.01



NS	Dimensions in mm					Weight in kg
	C	D1	G	H	SW	
100	94	101	G ½ B	87	22	
160	123.5	161	G ½ B	118	22	

Ordering example : PGT1 02-B-10-X-D1-S1-B-C-J2-G

PGT1	02	B	10	X	D1	S1	B	C	J2	G	
											Pressure type
											Pressure port
											Calibration certificate
											Connection
											Output signal
											Power supply
											Bar
											Range
											Electrical connections
											Dial size

Ordering information

PGT1	Bourdon Tube Pressure Gauges with output signal							
	Code	Dial Size In mm						
	01	60 mm						
	02	100 mm						
	03	150 mm						
	Electrical Connection							
	A	Circular connector						
	B	Din connector						
	C	Direct outlet 1.5 meter						
		Range	-1 . . . 0 . . . 1000Bar					
		(0-X) Psi or Bar	X: actual range					
			Code	Power supply				
			D1	24VDC				
			D2	220VAC				
				Code	Output signal			
				S1	4~20mADC			
				S2	1~5VDC			
				S3	0~5VDC			
				S4	0~10 VDC			
				Code	Connection			
				B	Bottom Connection			
				R	Back Connection			
				Code	Calibration certificate			
				C	Calibration certificate			
				X	None			
					Code	Pressure port		
					J1	M20×1.5 Male		
					J2	G1/2 Male		
J3					G1/4 Male			
J4	others							
	Code	Pressure type						
	G	Gauge pressure						
	A	Absolute pressure						



Address: 7191 Yonge street, Toronto, Canada

Tel: +16472221281(5 line)

Web: www.madecotech.com

Email: Info@madecotech.com